

Rapid Start ART

Connecting you to HIV treatment, care, and services within 24 hours.

WHAT IS RAPID START ART?



Rapid Start ART (antiretroviral therapy) is a program that connects newly diagnosed people to HIV treatment (ART), HIV medical care, and supportive services within 24 hours.



Care



Treatment



Services

WHAT TO EXPECT

1

Client is **referred** to Rapid Start ART by [NovaSalud testing program](#) for newly diagnosed clients or other provider for clients re-engaging in HIV care.

Client meets with Nexus Program staff to do a **program intake**. Intake includes consent forms, accelerated medication access approval and insurance enrollment.

2

3

Within 24 hours, client has a **medical appointment** with an HIV care provider. The appointment include HIV status confirmation, medical history, medical evaluation, laboratory tests (blood draw), and medication counseling.

Client receives up to 30 day supply of ART (HIV treatment) during appointment and **starts taking HIV treatment** right away.

4

5

Client meets with Nexus Program staff for **education and linkage to care**. Client is offered services they are eligible for and discusses where to receive follow up HIV care.

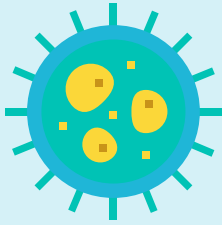
Client has **follow up** visits and/or phone check-ins at 1, 5, 10, 35-45, 90, and 180 days after starting treatment.

6

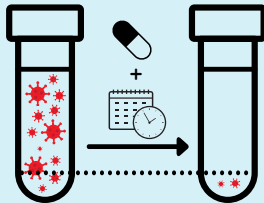


nexus
a program of VHO Inc

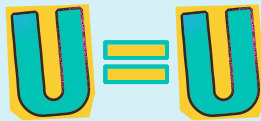
BENEFITS OF EARLY TREATMENT



Better immune system health. Starting HIV treatment early has been shown to improve the recovery of your CD4 cells (T cells that fight infection), which are the cells that HIV attacks.



Quickly get to undetectable. HIV treatment suppresses the amount of HIV in your body (viral load) to undetectable levels. Being undetectable helps prevent HIV from damaging your immune system.

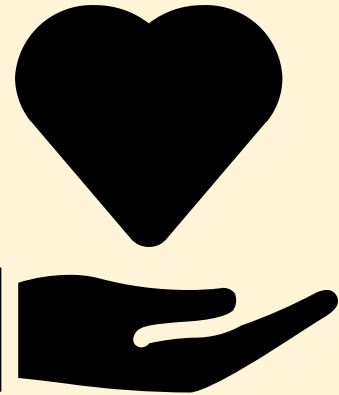


Prevent HIV transmission. It can take up to six months to get undetectable. Once you are undetectable, there is no longer enough HIV in your body for it to be transmitted through sex. This is called Undetectable = Untransmittable, or U=U.

HIV SUPPORTIVE SERVICES

The Nexus Program can offer supports based on your unique circumstances and eligibility guidelines. These supports may include:

- Assistance paying for HIV medications (VA MAP / Medicaid)
- Medical and non-medical case management
- Medical and laboratory services for people with no insurance
- Health insurance co-pay and deductible assistance
- Health insurance enrollment
- Emergency food vouchers
- Medical transportation assistance
- Mental health services



FOR MORE INFORMATION

Talk to your case manager or health care provider if you have questions, or learn more at:

- Virginia Department of Health [Living with HIV](#)
- National Institute of Health [Following an HIV Regimen: Steps to Take Before and After Starting HIV Medicines](#)
- Centers for Disease Control and Prevention [Living with HIV](#), [HIV Treatment](#) and [Understanding Care](#)
- National Institute of Health [10 Things to Know About HIV Suppression](#)